

## Skin Designer

The entire color scheme as well as the look-and-feel of the Net Phone can be changed by simply selecting a different “skin”. A “Skin Designer” is also on the Phone Colors menu allowing you to change or create a new “skin”. The “Skin Designer” can affect the following areas:

- Screen colors, texture, rounding, and appearance.
- LCD colors
- Calls window size.
- Toolbar color or transparent.
- Programmable Button shapes and colors.
- ACD Keys colors.
- Dial Pad button shape and colors.
- Graphic on the main screen.

The user can easily change to a different skin by right-clicking your mouse on the logo on the main window and selecting one of the “Skins” from the Phone Colors menu.

## Skins Files

Each “skin” is included in a skin file, which is a special file (ending in .NPS) installed in the Net Phone folder. You can eliminate a skin by simply deleting its skin file, in which case it will no longer be available to that user.

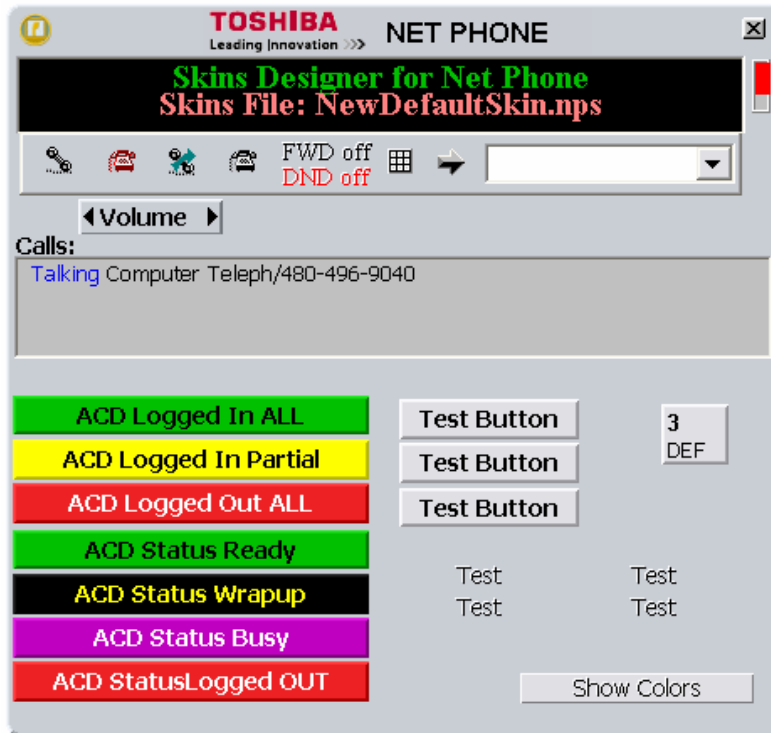
A number of “skins” are included with the Net Phone and others can be easily added. For more information about acquiring more skins or creating your own please refer to the Net Phone web site. Tools for creating and editing skins will be available there.

Skins files can be “published” to the Net Server so that they can be easily deployed to all or selective groups of Net Phone users (see Publishing Configuration Files in the Net Phone System Administrator Manual for details).

# Net Phone Colors

The entire color scheme as well as the look-and-feel of the Net Phone can be changed dramatically, by simply selecting a different “skin”. Also on the Phone Colors menu is <Skin Designer> which opens a utility for changing or creating a new “skin”. This document provides the User of the Skin Designer instructions on how to use this utility.

The main screen for the Skins Designer, shown below, provides a preview for how the skin will look as it is being designed.



The Skins Designer provides routines for changing the following items:

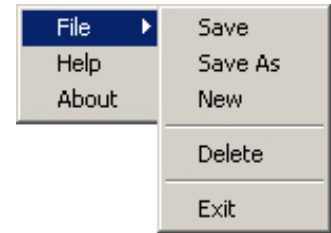
- Screen background colors, texture, rounding, and appearance.
- LCD colors
- Calls window size.
- Toolbar color or transparent.
- Programmable Button shapes and colors.
- ACD Keys colors.
- Dial Pad button shape and colors.
- Adding a graphic onto the main screen.

When the design is complete, the user can easily change to this skin by right-clicking the mouse on the logo on the main window and selecting name of the skin from the Phone Colors menu.

Each skin design is saved in a file, which is a file ending in .NPS. These files are stored along with other configuration data on your PC in the Local Settings Net Phone folder. A number of basic skin designs are included with Net Phone.

## Saving/Creating New/Deleting Skins

The Main Menu has a number of options for saving, starting a new, or deleting a skin file as well as the path to exit the Skins Designer program.

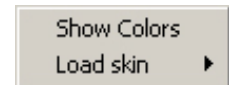


### ► To Create a New Skin

- Open the Main Menu and select File > New to start a new design.

### ► To Load an Existing Skin

- Right click an open area on the background and select Load skin > Skin File Name to change.

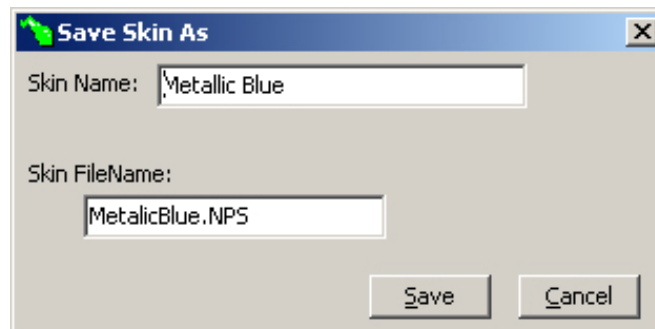


### ► To Save a Skin

- Once changes have been made, open the Main Menu and select File > Save.

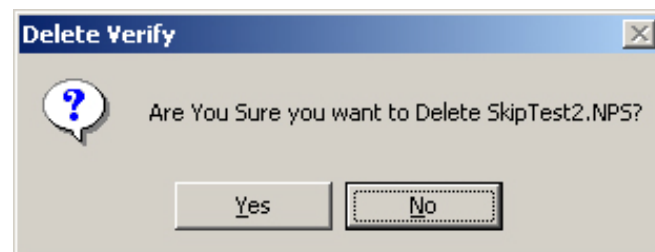
### ► To Save As a Skin

- When creating a new Skin, changing an existing skin, or wanting to save a skin using a different name, open the Main Menu and select File > Save As, enter a name for the skin and a name for the file. Click Save when done.



### ► To Delete a Skin

- With the Skin loaded to be deleted, open the Main Menu and select File > Delete. Click Yes in the pop up box to confirm the action. If a unique logo file is used for the Skin, another popup box will ask confirm if that logo file should be deleted as well.



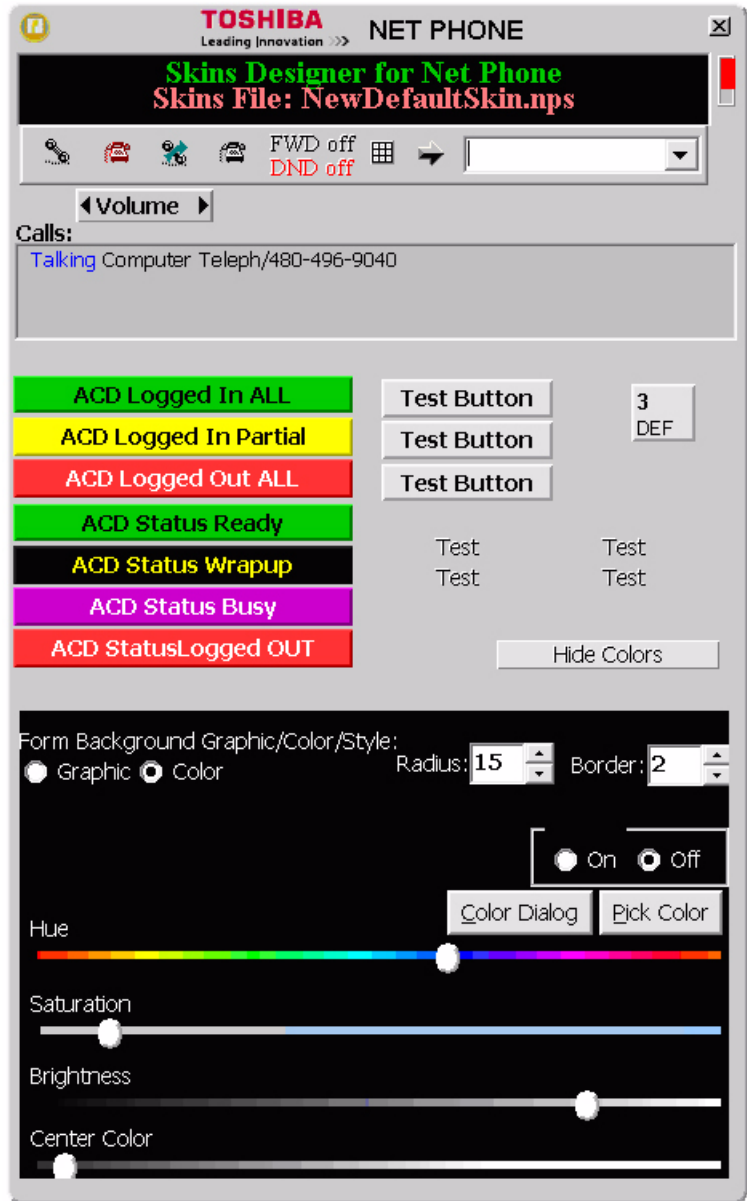
# The Skin Designer

## Step 1: Open a Skin File or Create a New File

- The design begins by loading an existing Skin File or starting with a new skin design. See the procedures above.

## Step 2: Set Background Color and General Appearance

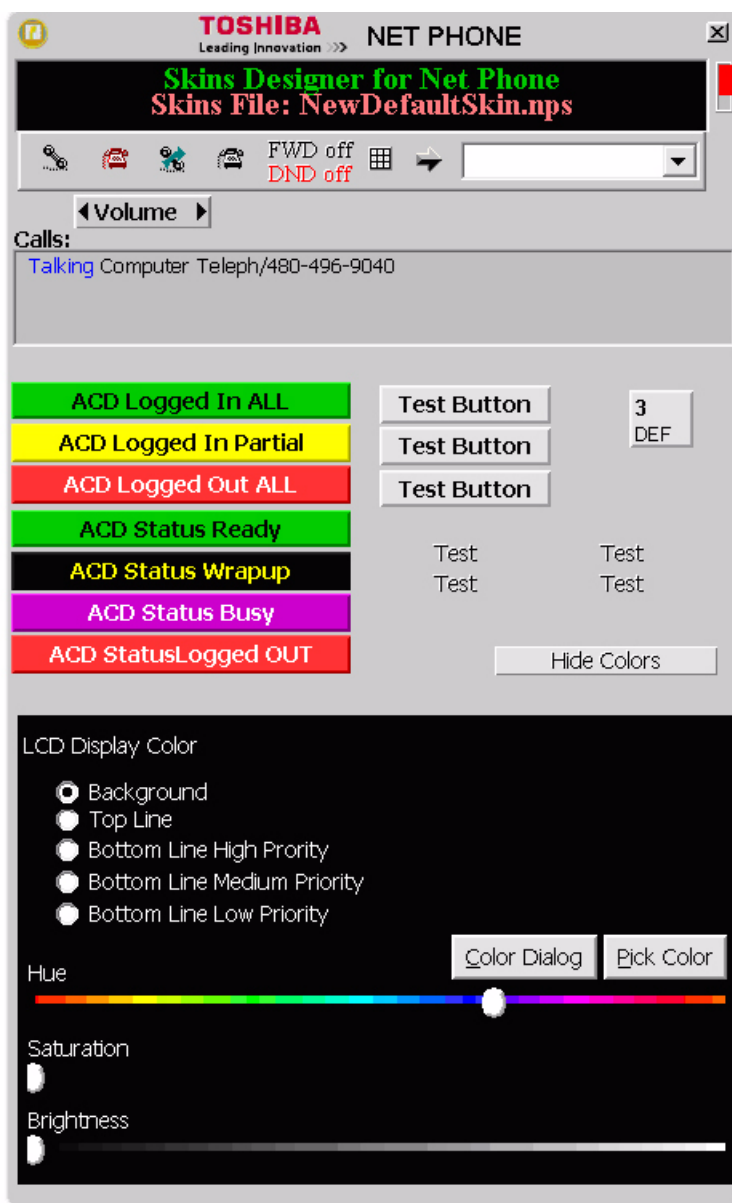
1. Right-click the Show Colors button.
2. Choose whether the appearance of Metallic is to be On or Off.
3. Enter a number or click the up/down keys to change the Radius of the corners on the edges of the Net Phone Skin. The larger the number the more round the corners.
4. Enter a number or click the up/down keys to change the Border appearance. The larger the number the softer the edges.
5. Click the Color Chooser button to choose a basic color or you can skip this step and use the sliders to choose a Background color.
6. Use the Hue, Saturation, Brightness and CenterColor sliders to choose or adjust the Background color for the main body of the skin.
7. Click Hide Colors when done.



## Step 3: Set LCD Background and Text Colors

The LCD Display reflects the current status of the phone and offers two lines. The background color and the top and bottom line text can be chosen for your display. Messages that appear on the bottom line can have three different colors depending upon the priority of the text being displayed. The priority is determined by your settings in the Extra Call Information configuration. These settings can be found in /Setup/ Preferences/General Tab/Extra Call Information.

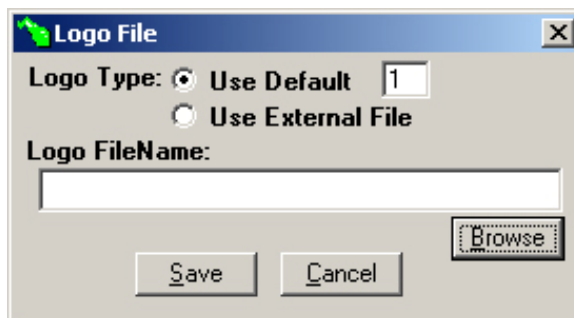
1. Right-click on the LCD area to bring up the LCD Display Color screen. This screen allows the setting of colors for Background, Top Line, Bottom Line High Priority, Bottom Line Medium Priority, and Bottom Line Low Priority items.
2. Click one of the radial buttons the item for setting the color.
3. Click the Color Chooser button to choose a basic color or you can skip and use the sliders to choose a color.
4. Using the Hue, Saturation, and Brightness sliders to choose or adjust the color as desired.
5. Repeat for each of the five items.
6. Click Hide Colors when done.



## Step 4: Insert your Logo into the Skin

A graphic of your choosing may be used for display in the title line of the Net Phone display. The Skin Designer provides a series of graphics and allows for using .jpg, .gif, or bmp-formatted graphics as well. The .gif is used when transparent backgrounds are needed. The graphic size should not be larger than 22 x 224 pixels to fit within the available space.

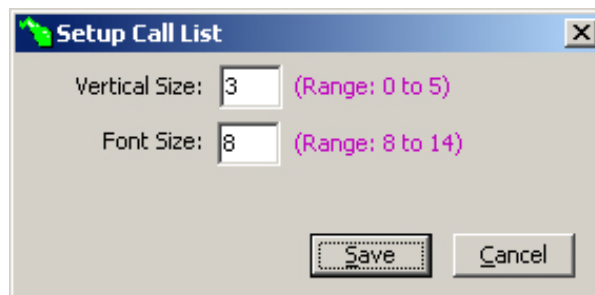
1. Right-click in the Logo area to bring up the Logo File screen.
2. Choose to either Use Default or Use External File for the Logo.
3. If you chose Use Default, enter a number for one of the default logo files. You may have to experiment to see what files exist.
4. If you chose Use External File, enter the path to the file name or choose Browse to find the file to use.
5. Click Save when done.



## Step 5: Set the Number and Font Size for Calls Window

The size of the Calls Window can be adjusted to be larger for users that handle a large number of calls and be smaller for those handling a single call at one time. Also the font size can be changed for easier viewing when needed.

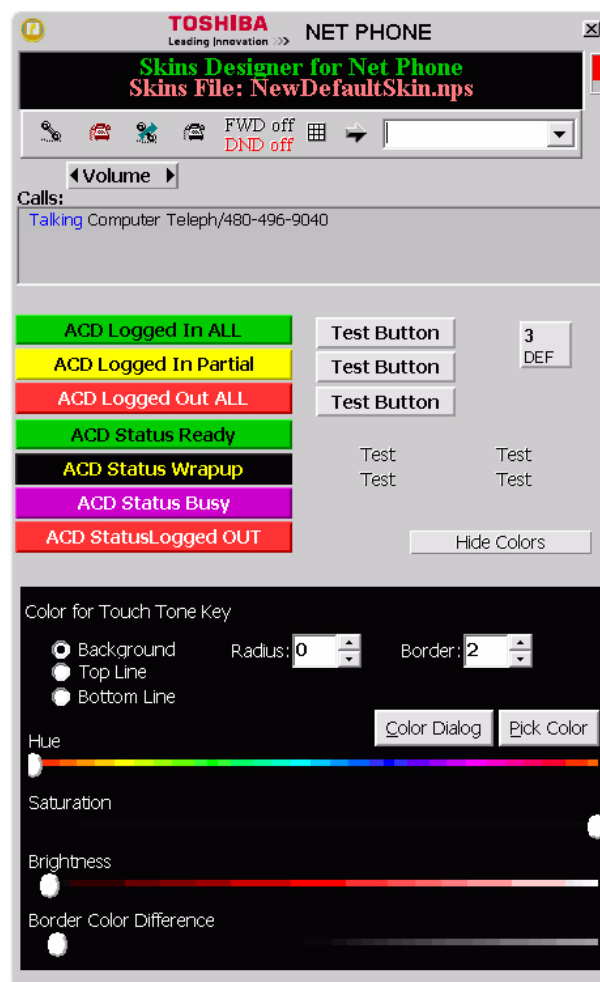
1. Right-click in the Calls Window to bring up the Setup Call List screen.
2. Enter a value (0 to 5) for the number of calls to appear in the window.
3. Enter a value (8 to 14) for the size of the font to use.
4. Click Save when done.



## Step 6: Set the Dial Pad Colors and Appearance

The Dial Pad can be customized to set the key background color, number color (Top Line) and letter color (Bottom Line). The amount of shadowing, corner radius and borders can be adjusted to change the appearance of each key.

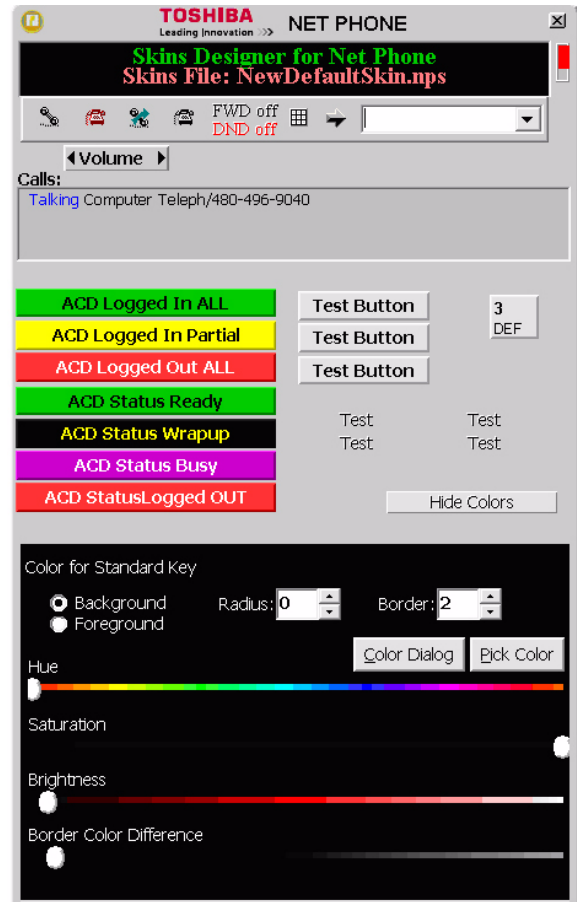
1. Right-click on the sample Dial Pad key to open the Color for Touch Tone Key screen. This screen allows the setting of colors for Background, Top Line, and Bottom Line.
2. Click one of the radial buttons for one of the three items to be set.
3. Click the Color Chooser button to choose a basic color or you can skip and use the sliders to choose a color.
4. Using the Hue, Saturation, Brightness, and Border Color Difference sliders to choose or adjust the color as desired.
5. Repeat for each of the three items.
6. Adjust Radius value to change the corner radius of each key.
7. Adjust Border to define spacing needed from edge before the characters are displayed.
8. Click Hide Colors when done.



## Step 7: Set Programmable Key Appearance

Net Phone has two types of keys, standard programmable keys and the wider ACD programmable keys. The color setting for the standard keys provides the default setting for most keys, while keys used for ACD features provide color choices based upon the ACD status, thus 6 different color choice settings are offered. Each type of key needs to be selected for making the color and appearance settings.

1. Right-click one of the Test Buttons or one of the ACD Buttons to open the Color for xxxxxx Key screen.
2. Click the radial button for Background color.
3. Click the Color Chooser button to choose a basic color or you can skip and use the sliders to choose a color.
4. Using the Hue, Saturation, Brightness and Border Color Difference sliders to choose or adjust the color for the main body of the skin.
5. Repeat the above for Foreground color. Note: The Radius and Border apply to the key can be skipped. Only Hue and Saturation can be changed for the color.
6. Enter a number or click the up/down keys to change the Radius of the corners on the keys Skin. The larger the number the more round the corners.
7. Enter a number or click the up/down keys to change the Border appearance. The larger the number the softer the edges.
8. Click Hide Colors when done.

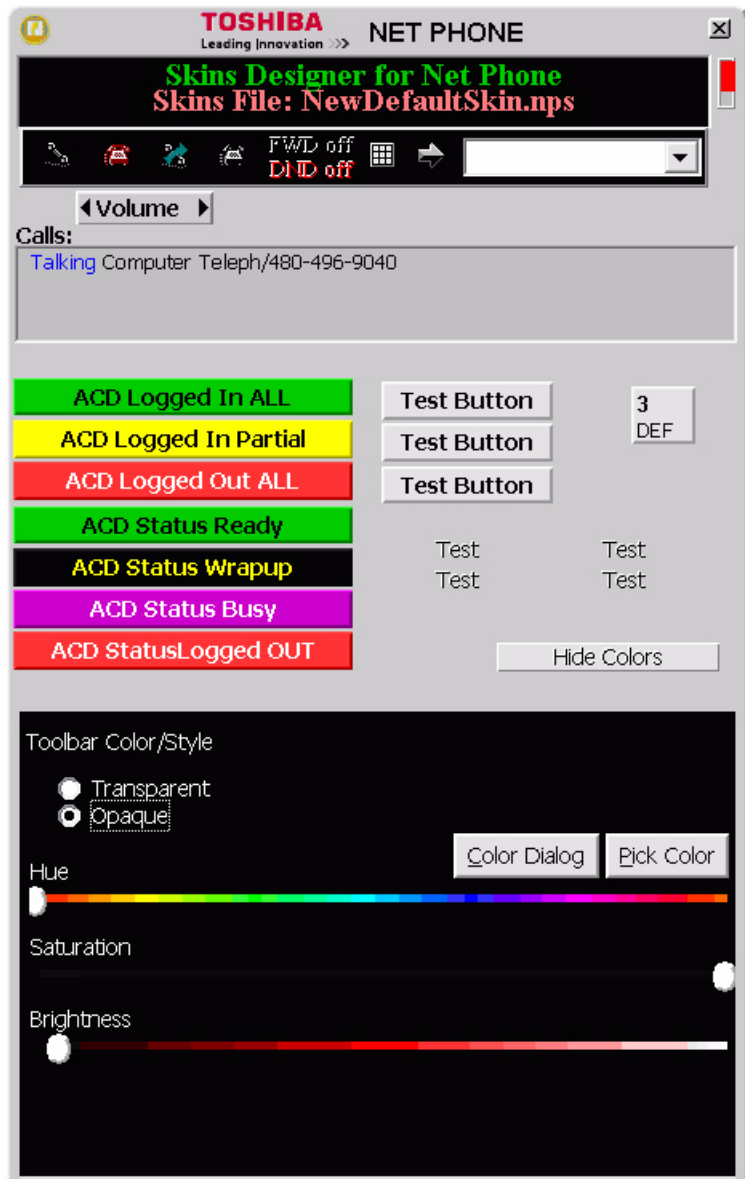




## Step 8: Set the Tool Bar Background Color

The tool bar can have a unique back color or become transparent and show through the colors selected for the main Net Phone background. Choose whether to use a transparent mode or a fixed color. When using a fixed color, choose the back color to use.

1. Right-click somewhere along the toolbar to bring up the Toolbar Color/Style screens.
2. Select either Transparent or Opaque.
3. If you chose Opaque, click the Color Chooser to select the color to use for the toolbar or skip this step and use the sliders for making the color selection.
4. Using the Hue, Saturation, and Brightness sliders to choose or adjust the color as desired.
5. Click Hide Colors when done.



## Step 9: Finish by Saving your Design

- Use the Save or Save As commands to save your design before exiting. See above for details.

-End of Document-